

# What is Geography

- Geography is about spatial thinking
- The questions we want to ask “What is where, Why there, and Why care?”
- This quote comes from By Charles F. Gritzner  
South Dakota State University

# By Charles F. Gritzner

## South Dakota State University

- Please read the article in D2L by Dr. Gritzner
- Be able to give the examples (Figure 1)
- What is?
- Where?
- Why there?
- Why care?

# 5 Themes of Geography

- Location
- Place
- Human – Environment Interaction
- Movement
- Regions

# Location

- **Absolute Location** – a specific description of the Where of a place, through the use of coordinates, street address, mile markers, etc.
- **Relative location** – a description of the Where of a place by comparing it to the Where of another place. California University of Pennsylvania is 35 miles southeast of Pittsburgh.

# Place

- The Physical Description of a place – Landscape, Climate, etc.
- The Human Description of a place – Economics, Politics, Culture, etc.

# Human – Environment Interaction

- Humans modify their environment
- Humans depend on their environment
- Humans adapt to their environment

# Movement

- Humans
- Goods
- Ideas

# Regions

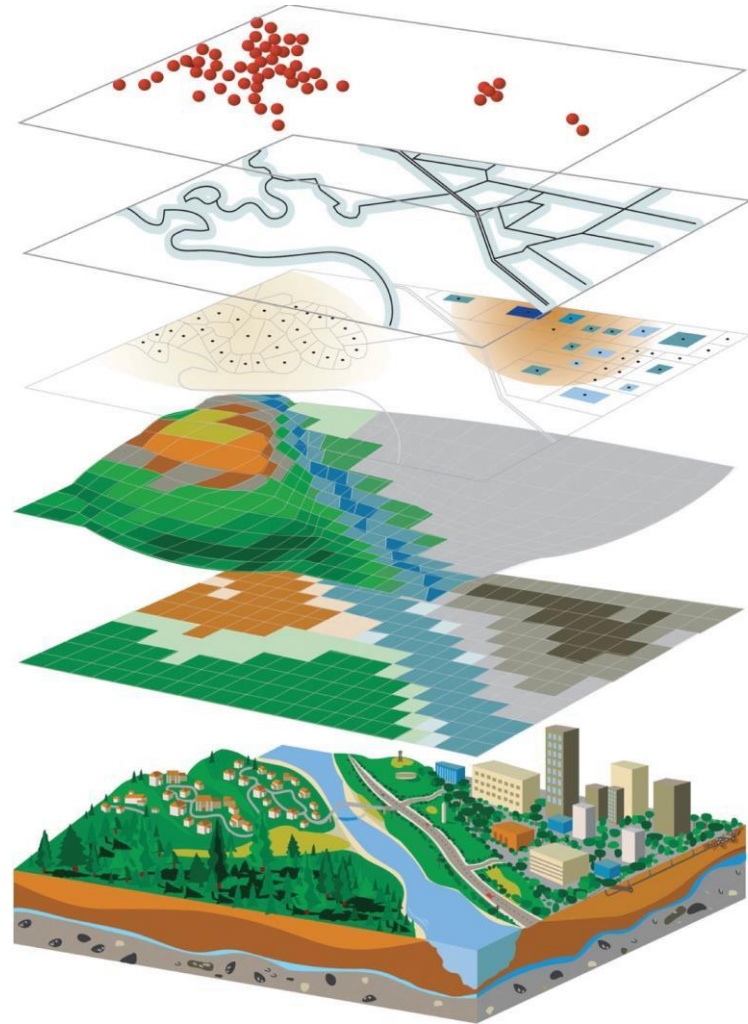
- Region
- Vernacular Region



# What is GIS?

- Geographic Information Systems (GIS)
  - Computer-based maps tied to databases and tools
  - Layers = Spatial Data

# GIS Layers



Copyright © Esri. All rights reserved. Used by permission. [www.esri.com](http://www.esri.com)