



## Initiative of the International Place-Based University Network

International Place-Based University Network: Academically Based, Globally Minded Community Engagement

JANUARY 21-22, 2021

For more info, visit: [ucis.pitt.edu/esc/events/international-place-based-university-network](https://ucis.pitt.edu/esc/events/international-place-based-university-network)

### PRESIDERS & FEATURED SPEAKERS:



**Patrick Gallagher**  
**Chancellor**  
**University of Pittsburgh**

As the University of Pittsburgh's 18th Chancellor, Patrick Gallagher directs one of the nation's premier public institutions for higher education and research. In this role, Gallagher oversees a community of more than 34,000 students at five distinct campuses. In addition, he supports the work of more than 14,000 faculty and staff members who are committed to advancing the university's legacy of academic excellence, community service, and research innovation.

Prior to his installation at Pitt, Gallagher spent more than two decades in public service and completed terms on a wide range of community boards and committees. He currently serves as chair of the Commission on Economic and Community Engagement for the Association of Public and Land-grant Universities.



**Chris Day**  
**Vice Chancellor and President**  
**Newcastle University**

A fellow of the Academy of Medical Sciences, Chris Day is recognized as an internationally renowned medical researcher. Day is a member of the Universities UK Board, chair of the Office for Strategic Coordination of Health Research and chair of the N8 Group of Research Universities. In addition, he will chair the institutional environment panel for REF 2021.



**Ann Cudd**  
**Provost & Senior Vice Chancellor**  
**University of Pittsburgh**

As provost and senior vice chancellor, Ann Cudd is responsible for all aspects of the University of Pittsburgh's academic mission including supporting scholarly excellence among the university's faculty members and student success among the undergraduate, graduate, and professional students.

Cudd is an active faculty member in the Pitt philosophy department. She is an accomplished teacher and scholar whose research explores themes of oppression, economic inequality, capitalism, and gender.

Previously, Cudd served as Boston University's dean of the College and Graduate School of Arts and Sciences.



**Ariel Armony**  
**Vice Provost for Global Affairs**  
**Director, University Center for International Studies**  
**University of Pittsburgh**

Ariel Armony leads the University of Pittsburgh's global engagement as the vice provost for Global Affairs and directs the University Center for International Studies (UCIS), home to the university's top-ranked thematic and area studies centers.

Under Armony's leadership, UCIS received the Senator Paul Simon Award for Comprehensive Internationalization in 2017 from NAFSA: The Association of International Educators.

Before arriving at Pitt, Armony led the University of Miami's Institute for Advanced Study of the Americas. He has been a Fulbright scholar, Rockefeller Foundation scholar, and residential fellow at the Woodrow Wilson International Center for Scholars.

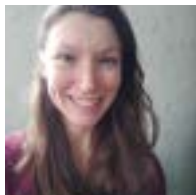


**Jane Robinson**  
**Pro-Vice Chancellor, Engagement and Place**  
**Newcastle University**

As Newcastle University's Pro-Vice Chancellor, Engagement and Place, Jane Robinson is striving to build partnerships that will enhance the University's social, economic, and cultural contribution to society.

Before taking on her role at Newcastle, Robinson served as the Chief Operating Officer at Durham University. In addition, she was the Chief Executive of Gateshead Council (local government) and Director of External Relations at Arts Council England.

## MODERATORS AND PANELISTS:



**Amy Babay**  
**Assistant Professor, School of Computing and Information**  
**University of Pittsburgh**

Amy Babay recently joined the University of Pittsburgh School of Computing and Information as an assistant professor with research interests in distributed systems and networks, and next-generation Internet services, resilient critical infrastructure, and resilient communities in particular. Amy completed a PhD in Computer Science from Johns Hopkins University in 2018, focusing on low-latency network communication for interactive applications.



**Daniel Bain**  
**Associate Professor, Department of Geology and Environmental Science**  
**University of Pittsburgh**

Dr. Bain received his PhD from the Department of Geography and Environmental Engineering at Johns Hopkins University in 2004. He was a National Research Council Post-Doctoral Fellow at the US Geological Survey from 2004-2006 before joining the Department in 2007. Dr. Bain is currently one of the University of Pittsburgh's Faculty Fellows in Sustainability.



**Jenna Baron**  
**Executive Director**  
**ARYSE (Alliance for Refugee Youth Support and Education)**

Jenna Baron is the Executive Director of ARYSE. She earned a bachelor's degree in Anthropology, Global Studies, and African Studies in 2013 from University of Pittsburgh. Jenna is 2013 Fulbright Scholar (Kenya), 2015 Humanity in Action John Lewis Fellow, New Leaders Council Pittsburgh Alumna, and serves on the board of directors for Global Minds Initiative and PUMP. Most recently, Jenna was recognized as one of Pittsburgh's 40 Under 40. Jenna's work is motivated by a belief that education and creative expression can be tools for liberation. She envisions ARYSE as an international model for supporting refugee and immigrant youth in becoming engaged, confident, and celebrated members of society.



**Fred Brown**  
**President and CEO**  
**The Forbes Funds**

Fred Brown was appointed President & CEO of The Forbes Funds on January 8, 2018. Prior to that time Mr. Brown served as the President & CEO of the Homewood Children's Village. Mr. Brown has worked in the non-profit arena and in the public education sector for over 30 years. Mr. Brown has continued to invest his time, energies, and expertise in assisting a variety of communities and organizations to develop new and innovative programs that seek to empower at-risk populations. A specific focus of Mr. Brown's work includes working with African American males to reduce minority dropout rates in post-secondary environments and bridging the divide between minority communities and their knowledge regarding energy reduction planning, carbon footprint analysis, and environmental justice leadership.



**Professor Christopher Chapman**  
**Director of Policy Scotland University of Glasgow**

Professor Chris Chapman was appointed Chair of Educational Policy and Practice at the University of Glasgow in January 2013 and became the Founding Director of the Robert Owen Centre for Educational Change.

Chris is Director of Policy Scotland the University's Centre for public policy research and knowledge exchange and PI of Children's Neighbourhoods Scotland a major three-year Scottish Government investment in researching and developing a place-based approach to tackle poverty and improve outcomes for children and young people. Chris is also Director of the Network for Social and Educational Equity at the University of Glasgow and is seconded part-time as Senior Academic Advisor to Scottish Government. He is also incoming President of the International Congress for School Effectiveness and Improvement and serves as a member of the First Minister's International Council of Education Advisers.



**Diego Chaves-Gnecco, M.D.**  
**Associate Professor, School of Medicine, Department of Pediatrics**  
**University of Pittsburgh**

Honored as the 2019 Pediatrician of the Year by the American Academy of Pediatrics, Pennsylvania Chapter, Diego Chaves-Gnecco specializes in pediatric developmental and behavioral medicine.

His clinical and academic interests include the diagnosis and treatment of children with autism and attention deficit hyperactivity disorder, providing care to families and children with disabilities, providing care to children from minority and underserved populations, and addressing barriers to health care access.



**Lynne Corner**  
**Dean of Engagement, Faculty of Medical Sciences**  
**Newcastle University**

In addition to her role as the director of engagement for Newcastle University's Faculty of Medical Sciences, Lynne Corner leads VOICE (Valuing Our Intellectual Capital and Experience) as well as the National Institute for Health Research Newcastle Biomedical Research Centre's patient involvement. Corner is a social gerontologist.



**Paula Davis**  
**Associate Vice Chancellor for Diversity, Equity, and Inclusion,**  
**Health Sciences**  
**University of Pittsburgh**

As Associate Vice Chancellor for Diversity, Equity, and Inclusion, Health Sciences, at the University of Pittsburgh, Paula K. Davis, MA, coordinates the recruitment and retention of diverse faculty, students, and staff in the health sciences schools. She provides education on cultural competence, creating an inclusive environment and eliminating structural and implicit bias. In addition, her office aims to increase engagement among all health sciences stakeholders through a number of initiatives that examine the intersection of health sciences, racism, and marginalized populations.

As the founding assistant vice chancellor for health sciences diversity since 2007, Ms. Davis has led the Office of Health Sciences Diversity in promoting a diverse and inclusive environment throughout the Schools of the Health Sciences. At the School of Medicine, she has served as Assistant Dean for Admissions and Financial Aid, for Student Affairs, and Director of Diversity Programs. Ms. Davis has worked in a variety of student-support fields, including academic advising, admissions, alumni relations, and financial aid and has worked with pre-college, undergraduate, graduate, and medical students.



**Susan Dawkins**  
**IISE Affiliate**  
**Engagement Coordinator, Center for Russian,**  
**East European & Eurasian Studies**  
**University of Pittsburgh**

Susan Dawkins is a doctorate and is an experienced advisor and instructor for university students and other adult learners. Susan has expertise in community and college success programming, including underrepresented populations (e.g., U.S. newcomers, non-native English speakers, first generation, low-income, racial/ethnic minorities, adult learners, and students with disabilities). She has taught courses on: Introduction to higher education, study strategies, English as a second language (in higher education and community settings), oral communication, and peer tutoring theory. She is also a writing, research, and language consultant for graduate students.



**Sabina Deitrick**

**Associate Dean and Associate Professor at the Graduate School of Public and International Affairs and Co-Director of Urban and Regional Analysis program at the University Center for Social and Urban Research (UCSUR) University of Pittsburgh**

Sabina Deitrick, PhD, is Associate Dean and Associate Professor at the Graduate School of Public and International Affairs (GSPIA) and co-director of the Urban and Regional Planning program at the University Center for Social and Urban Research (UCSUR) at the University of Pittsburgh. Her research focuses on issues of transition and transformation in post-industrial cities and their neighborhoods. She currently serves on the City of Pittsburgh Planning Commission and is a board member of the Steel Valley Authority. She received her BA and MA from the University of Pennsylvania and PhD in city and regional planning from the University of California, Berkeley.



**Lina Dostilio**

**Associate Vice Chancellor, Community Engagement University of Pittsburgh**

Lina Dostilio's responsibilities as Pitt's Associate Vice Chancellor for Community Engagement include cultivating strategic opportunities and implementing the university's place-based community engagement initiative.

In her role as the 2019 Coalition of Urban and Metropolitan Universities Research Fellow, Dostilio is developing a multi-institution research project designed to investigate the impact of place-based community engagement on community capacities.

Dostilio's research as a scholar-administrator focuses on multi-sector partnership development, place-based community engagement, and the evolution of the community engagement profession within higher education.



**Alison Drever**

**Director of Children's Neighbourhoods Scotland**

Alison was previously a Senior Education Officer with Education Scotland, the national improvement agency, where she held a number of different roles, including Attainment Advisor and lead officer for the Scottish Attainment Challenge, a national programme focused on addressing the poverty-related attainment gap. Prior to that she worked with headteachers and teachers across Scotland providing support for different areas of school improvement, including school self-evaluation, strategic curriculum development and design, monitoring progress and assessment. Before joining Education Scotland Alison held a variety of teaching and leadership roles in the education system in the primary and secondary sectors and at district level.





**Matt Dunlop**  
**Head of Sustainability**  
**Newcastle University**

Matt Dunlop joined Newcastle University in 2006 and has developed and led the Sustainability Team since then. As Head of Sustainability, he is responsible for the development and delivery of University sustainability strategy driven by the University's core values of social and environmental justice. The Team ensures compliance with all environmental legislation as well as delivering a wide range sustainability programmes and engagement activities. These include the university's response to the climate emergency, Net-Zero and carbon adaptation, the development and support of sustainable travel choices for staff and students, and improving resource efficiency and integrating circular economy principles into University processes.



**Daren Ellerbee**  
**Director, Homewood Community Engagement Center**  
**University of Pittsburgh**

As the director of Pitt's Community Engagement Center in Homewood, Daren Ellerbee interacts with various stakeholders including elected officials, community leaders, activists, residents, and a 33-member community advisory council.

Ellerbee was recently featured on [ImaginePittsburgh.com](http://ImaginePittsburgh.com) and was a 2018 *Pittsburgh Magazine* and PUMP (Pittsburgh Urban Magnet Program) 40 Under 40 award winner. Prior to her role at Pitt, Ellerbee served as a community affairs and equity strategist for the Urban Redevelopment Authority of Pittsburgh.



**Emily Elliott**  
**Director, Pittsburgh Water Collaboratory**  
**Professor, Department of Geology & Environmental Science,**  
**University of Pittsburgh**  
**Director, Regional Stable Isotope Laboratory for Earth**  
**& Environmental Science Research**

Emily Elliott is Director and co-founder of the Pittsburgh Collaboratory for Water Research, Education, and Outreach that bridges efforts in water research, governance, and action at the University of Pittsburgh. She is a Professor in the Department of Geology & Environmental Science at the University of Pittsburgh. She is trained as a Science Ambassador through the National Academies of Sciences "Science & Engineering Ambassador Program" and the 2018 recipient of the American Geophysical Union's Sulzman Award for Excellence in Education and Mentoring. She is passionate about the importance of interdisciplinary geosciences for addressing sustainability challenges, advancing diversity and inclusion in the geosciences, community-engaged research, and science communication.



**Grant Ervin**  
**Chief Resilience Officer**  
**City of Pittsburgh**

As Pittsburgh's chief resilience officer, Grant Ervin oversees the integration of sustainability and resilience into the city's services, programs, and policy. He has helped lead the development of a variety of programs including the Uptown Eco-Innovation District, District Energy Pittsburgh, Pittsburgh and Neighborhood Community Information System, and the Pennsylvania Community Transport initiative.



**Michael Glass**  
**Urbanist in the Urban Studies Program**  
**University of Pittsburgh**

Michael is an urbanist working at the intersection of geography and planning. His primary research interests are in metropolitan planning and governance, and in the role of stakeholder visions in shaping city identities, growth and development. He conducts research into practices of bordering: whether through the erection and performance of political boundaries, the development of social spaces such as neighborhood, or the geographical imaginaries created by the consulting firms, urban elites, and other stakeholders. He is also interested in housing and infrastructure, both as material outcomes of urban processes and as a means to understand the dynamism of city-regions. He is currently a Senior Lecturer and Interim Director of the University of Pittsburgh's Urban Studies Program, and a Faculty Fellow with the University of Pittsburgh Honors College. His books include *Performativity, Politics, and the Production of Social Space* (Routledge, 2012), and *Priced Out: Stuyvesant Town and the Loss of Middle-Class Neighborhoods* (NYU Press, 2014).



**Aisling Healy**  
**Assistant Professor in Political Science**  
**Department of Political and Territorial Sciences**  
**Université Jean Monnet in Saint Étienne, France**

Dr. Aisling Healy is an assistant professor in Political Science at the Department of Political and Territorial Sciences, Université Jean Monnet in Saint Étienne, France. As a researcher she is part of the Triangle research centre (UMR CNRS 5206). Her main research topics concern the making of cities through urban policies, notably with a focus on the key role economic actors may play in these public policies. She has published articles in referenced journals (*Politique Européenne*, *Métropoles*). She was involved in INTERACT (7th PCRD) from 2002 until 2005. She's been doing research on Lyon since 2001, on city-networking in Europe since 2003 and on Saint-Etienne and Pittsburgh since 2012. She is the UJM coordinator for a Jean Monnet Network Grant held by the University of Pittsburgh and including additional partners at Newcastle University and Sciences Po Lyon.





**Kathy Humphrey**  
**Senior Vice Chancellor for Engagement and**  
**Secretary of the Board of Trustees, University of Pittsburgh**

Kathy Humphrey serves as the University of Pittsburgh's senior vice chancellor for engagement and secretary of the Board of Trustees. In these roles, she oversees the University's internal and external relations, focusing on facilitating business engagement, strategic initiatives and partnerships and government interaction at all levels.

Outside the University, Humphrey serves on the boards of the Urban League of Greater Pittsburgh, Leadership Pittsburgh, Gwen's Girls and the Blood Science Foundation. She also serves on the executive committee of the International Women's Forum of Pittsburgh and is chair of The Forbes Funds.



**Jennine Jonczyk**  
**Water Specialist**  
**Newcastle University**

Jennine Jonczyk is a water specialist, with a PhD in mitigation methods to reduce diffuse water pollution, and a holistic catchment scientist with over 12 years of experience of environmental monitoring. Jennine is enthusiastic about many things and passionate about beautiful and functional urban drainage!



**Eileen Kaner**  
**Director of the National Institute for Health Research (NIHR) Applied**  
**Research Collaboration for the North East and Cumbria and an NIHR**  
**Senior Investigator**  
**United Kingdom**

Professor Eileen Kaner is the Director of the National Institute for Health Research (NIHR) Applied Research Collaboration for the North East and Cumbria and an NIHR Senior Investigator. She is also an applied behavioural scientist and her research programme aims to improve health and well-being across the life-course by promoting evidence-based interventions to reduce risks due to alcohol, substance use and linked mental health problems. Kaner is a founding member of Fuse- a UKCRC centre of excellence in translational public health and a lead investigator in the NIHR School of Public Health Research, the NIHR School Care Research and NIHR Policy Unit in Behavioural Sciences.



**Louise Kempton**  
**Senior Research Associate & Associate Dean (Research and Innovation),**  
**Faculty of Humanity and Social Sciences**  
**Newcastle University**

With more than 20 years of experience as a researcher, policy maker and practitioner in local, regional and, international economic development, Louise Kempton's role at Newcastle University is to help shape and implement the faculty's strategy for research and innovation. Kempton is also building local collaborative leadership in an effort to provide innovative solutions for local challenges and opportunities.



**Maja Konitzer**  
**Program Manager of the Global Studies Center**  
**University of Pittsburgh**

Maja Budovalcev Konitzer is Program Manager of the Global Studies Center and serves as the Center's programming and community engagement contact. She received her doctorate in Education (Language, Literacy, and Culture) from the University of Pittsburgh examining how students at the high school level develop global competence and critical thinking skills. Prior to joining the Global Studies Center, Maja worked on programming with the Center for Russian, East European and Eurasian Studies (REEES) at Pitt, and taught various ESL and foreign language (Bosnian/Croatian/Serbian) classes to both the K-12 and university-level students.



**Majestic Lane**  
**Chief Equity Officer & Deputy Chief of Staff**  
**City of Pittsburgh**

Majestic Lane serves as the Deputy Chief of Staff and Chief Equity Officer for Mayor William Peduto. As Chief Equity Officer and Deputy Chief of Staff, Majestic leads the Peduto administration's focus on opportunity for all residents of the City of Pittsburgh concerning education, workforce development, safe & healthy communities, and digital inclusion. Additionally, he leads the administration's engagement with national organizations regarding equity and inclusion strategies. Prior to serving as Deputy Chief of Staff, Majestic was the Deputy Chief of Neighborhood Empowerment where he coordinated the administration's neighborhood equity efforts through community driven development and affordable housing initiatives. Majestic attended the University of Pittsburgh and lives in North Point Breeze.



**Walter Lewis**  
**President & CEO, Homewood Children's Village**  
**Pittsburgh, PA**

Walter Lewis is the President & CEO of Homewood Children's Village, where he oversees HCV's work and partnerships across the cradle to career pipeline. Walter began his journey at HCV as a volunteer. Over the past six years he has served at every level of the organization, from part-time after school work, to program management and later as a director. He received his BS from Cheyney University in computer science and his MS from Carnegie Mellon University in computational biology. Walter currently resides in the Homewood community with his wife and their four children.



**Graham Long**  
**Senior Lecturer in Politics**  
**Newcastle University**

Graham Long is senior lecturer in Politics at Newcastle University, working on implementation and review of the SDGs. His current work around the SDGs has two main strands. One is on localisation of the SDGs, working in partnership with local government in London and Newcastle. For Newcastle University's Growth and Prosperity Delivery Group, Graham currently leads a project to assess data and performance on the SDGs in Newcastle, working with Newcastle Council. He sits on Newcastle University's SDG committee which works to embed the SDGs in Newcastle's teaching, research, engagement and operations. His second current project is a report for UN DESA assessing the impacts of COVID on SDG implementation and follow up. This work is based on two surveys of states and stakeholders conducted in Sep-Oct. Graham has a track record of multi-stakeholder projects on SDG implementation and review at scales from global to local – most recently for the London Sustainable Development Commission, the Scottish Government, UK Parliament, WWF, and the UN. Graham was special advisor on the SDGs to the International Development Committee of the House of Commons in 2019.



**Josué López**  
**Assistant Professor of Decoloniality and Equity in Teacher Education**  
**University of Pittsburgh**

Josué López examines how education - and schooling more specifically - meets our needs and interests so that we may live well. His research has examined the continuity of education for mobile Indigenous students migrating from Guatemala to the United States. His current research examines the relationship between mobility and settler colonialism, the implications of Euromodern discipline in schools, and alternative histories of social foundations in education. At the University of Pittsburgh, López facilitates courses such as Teaching and Learning for Secondary Social Studies Education, Research Seminar in Education, and Decoloniality and Education.



**Sarah Mendelson**  
**Distinguished Service Professor Of Public Policy and**  
**Head Of Heinz College In Washington, DC**  
**Carnegie Mellon University**

Ambassador Sarah E. Mendelson served as the US Representative to the Economic and Social Council at the United Nations until January 20, 2017. Confirmed by the Senate in October 2015, she was the USUN lead on international development, human rights, and humanitarian affairs. There she oversaw campaigns to get country-specific resolutions passed in the General Assembly and to get NGOs, including the Committee to Protect Journalists, accredited to the UN. She led efforts to elevate the issue of combating human trafficking and was senior lead for the President's Summit on Refugees.

Prior to her appointment as Ambassador, she served as a Deputy Assistant Administrator at USAID from 2010-2014 where she was the Agency lead on democracy, human rights, and governance.

A member of the Council on Foreign Relations and the author of over 70 scholarly and public policy publications, Ambassador Mendelson received her BA in History from Yale University and her PhD in political science from Columbia University.



**Elizabeth Miller**  
**Division Director, Adolescent and Young Adult Medicine and**  
**Professor of Pediatrics, Public Health and Clinical and Translational Science**  
**Edmund R. McCluskey Chair in Pediatric Medical Education**  
**Medical Director, Community and Population Health,**  
**UPMC Children's Hospital of Pittsburgh**  
**Scientific Director, Children's Community Health Collaborative,**  
**UPMC Children's Hospital of Pittsburgh**  
**Co-Director, Community Engagement, Clinical and Translational Science**  
**Institute, University of Pittsburgh School of Medicine**  
**Medical Director, Shuman Juvenile Detention Center and 412 YouthZone**

Elizabeth Miller is the director of the Division of Adolescent and Young Adult Medicine and maintains an active research program focused on reducing gender-based violence to improve adolescent health with funding from the National Institutes of Health (NIH), CDC, Office on Women's Health, and foundations.

Miller also serves as research consultant to Futures Without Violence, a national nonprofit organization providing resources to health care providers in their efforts to prevent domestic violence and sexual assault. Project Connect, a national training project funded by the Office on Women's Health, involves work with states and tribal organizations on the integration of partner-violence prevention and intervention into public health programs, specifically reproductive health, adolescent health, and maternal child health programs. Miller has served as the evaluator for this project as well as a similar project located in community health centers in California, funded by the Blue Shield of California Foundation.



**Emily Murphy**  
**Lecturer in Children's Literature**  
**Newcastle University**

Dr. Emily Murphy is a Lecturer in Children's Literature at Newcastle University, with research interests in international children's literature, childhood studies, and global citizenship education. She has published essays in *The Lion and the Unicorn*, *Children's Literature Association Quarterly*, and *Jeunesse*. Her monograph, *Growing Up with America: Youth, Myth, and National Identity, 1945-Present*, was published by the University of Georgia Press in September 2020.



**Angela Maria De Randolpho Paiva**  
**Associate Vice President, Academic Affairs, International Programs**  
**Associate Professor, Social Sciences Department**  
**Pontifical Catholic University of Rio de Janeiro (PUC – Rio)**

Angela Maria De Randolpho Paiva has done extensive research in the social construction of citizenship and inequality in Brazil. She has also developed research projects on social movements and participation in the public sphere, focusing on the role of religion in political mobilization, inequality in the educational system, race relations, and youth and affirmative action in higher education. Paiva is a member of the executive council of ANPOCS, Brazil's main social science association.



**Nicola Palmarini**  
**Director of UK's National Innovation Centre for Ageing (NICA)**  
**United Kingdom**

Palmarini is the Director of UK's National Innovation Centre for Ageing (NICA) a world-leading organisation, created with an investment from UK Government and Newcastle University, to help create a world in which we all live better, for longer.

Before, he was research manager at the MIT-IBM Watson AI Lab in Cambridge, Massachusetts, a \$250 million academic-industry partnership for the responsible advancement of artificial intelligence. He holds a decade of experience in research on supporting older adults' autonomy and independence. He is an author, teacher, applied research scientist. He is the author of five books and member of several boards included the Scientific Advisory Committee at McMaster Institute for Research on Aging (MIRA), GIMI (Global Management Innovation Institute) and the Scientific Board of the Humane Technology Lab at Università Cattolica del Sacro Cuore of Milan.



**Clyde Wilson Pickett**  
**Vice Chancellor, Office for Equity, Diversity, and Inclusion**  
**University of Pittsburgh**

Clyde Wilson Pickett (He/Him/His) serves as University of Pittsburgh's Vice Chancellor for Equity, Diversity, and Inclusion providing leadership for university-wide comprehensive diversity, equity, and inclusion strategy. Dr. Pickett joined Pitt following a national search having previously served as the chief diversity officer for the Minnesota State Colleges and Universities System.

Prior to serving Minnesota State, Pickett held positions at several other colleges and universities, including the Community Colleges of Allegheny County (CCAC) in the role of Special Assistant to the President for Diversity and Inclusion, Director of Multicultural Development/Director of New Student Orientation at Ohio Northern University, and roles at Morehead State University and the University of Kentucky.

Pickett holds a doctoral degree from the University of Pittsburgh's School of Education and a master's degree from the Morehead State University. He received his undergraduate degree in agricultural economics from the University of Kentucky.



**Vee Pollock**  
**Dean of Culture and Creative Arts**  
**Newcastle University**

Vee Pollock is Dean of Culture and Creative Arts at Newcastle University, where she works with colleagues across the university and the cultural sector to catalyse and develop initiatives contributing to research and wider economic, cultural and societal benefit. Vee also convenes the Russell Group Culture Network, a peer network of cultural leaders from across the 20 most research-intensive universities in the UK. She has recently been appointed Chair of Newcastle's Cultural Compact, charged with developing a strategy for the future of culture in the city. She is an art historian by training and researches the relationship between art and urban environment, and public art practices.





**Judith Rankin**  
**Dean of Equality, Diversity and Inclusion**  
**Newcastle University**

Judith was appointed as the first Newcastle University Dean of Equality, Diversity and Inclusion in 2015. In her role, she is working towards creating an inclusive environment for everyone by identifying and removing barriers that could prevent colleagues and students reaching their full potential. She led the recent, successful Institutional Athena Swan Silver application, the second at Silver level, which recognises and celebrates good practices in higher education which advance gender equality. She is a member of the Race Equality Charter Self-assessment team which is working to improve the representation, progression and success of colleagues and students from Black, Asian and Minority Ethnic groups. Given the importance and influence colleague networks can have, she has been working over the past two years to support the development of EDI networks at Newcastle University. She is co-leading the group which is working towards gaining University of Sanctuary status for Newcastle University, indicating that the University is a welcoming place for refugees. Judith also co-chairs the National EDI Academic Network (NEDIAL), a network of University senior academic EDI leaders.

Judith Rankin is Professor of Maternal and Child Health and co-lead of the NIHR North East and North Cumbria Applied Research Collaboration's Supporting Children and Families theme. Her prevention maternal and child public health research focuses on developing better and integrated maternity and child health and social care to improve outcomes and reduce inequalities. She also leads a research programme on longer-term outcomes for children with complex conditions.



**Pat Ritchie**  
**Chief Executive**  
**Newcastle City Council**

As chief executive of Newcastle City Council, Pat Ritchie has delivered a significant programme of transformational change since joining the council in 2013, creating the conditions for sustained economic growth in the city; notably securing the multi-million-pound investment deal to bring Legal & General to Newcastle's flagship 'Helix' development. Pat also led on negotiations with government to secure a devolution deal for the new North of Tyne Mayoral Combined Authority. She is former chief executive of the Homes and Communities Agency (Homes England) and former deputy chief executive of the Regional Development Agency (One NorthEast) and continues to influence housing and economic development policy nationally. She co-chaired the Service Transformation Challenge Panel government taskforce in 2014. In January 2020 Pat became Chair of the Government Property Agency; overseeing its priorities to improve working environments on the government estate, support new ways of working and drive productivity and engagement.



**Samantha Robson**  
**Head Teacher at Bridgewater Primary School,**  
**Newcastle upon Tyne, UK**

Mrs. Samantha Robson has been a Head Teacher at Bridgewater Primary School, a 0-11 years fully extended school in the west of Newcastle, England, for 12 years. Bridgewater has been judged 'outstanding' by Ofsted since 2013. Mrs. Robson is also a Local Leader of Education and for the academic year 15/16 was the Acting Head Teacher at Broadwood Primary School. In February 2015, the West End Schools' Trust was established with 7 local primary schools, the Local Authority, Newcastle University, The Centre for Life, Healthworks and Tyne and Wear Museums. Mrs. Robson is a Trustee for the West End Schools' Trust. Mrs. Robson has been a teacher for 27 years with most of that time being in Newcastle, but four years were spent in South Tyneside. Over the course of her 27 years of teaching experience, Mrs. Robson has taught in 5 schools, all of which served areas of significant deprivation teaching students in the 0-11 age range. Mrs. Robson holds a degree in Psychology and Social Sciences, with a master's degree in Education. Mrs. Robson holds the National Professional Qualification for Headship and is currently studying for her doctorate in Education.



**Paulo Hilário Nascimento Saldiva**  
**Deputy Director of the IEA-USP**  
**Full Professor at USP's Faculty of Medicine**  
**University of Sao Paulo**

Paulo Hilário Nascimento Saldiva is the deputy director of the IEA-USP and a full professor at USP's Faculty of Medicine (FMUSP), having graduated in medicine and obtaining a PhD in pathology from the FMUSP. He has been a member of the Scientific Committee of Harvard University's School of Public Health and member of the Air Quality Committee of the World Health Organization (WHO). He is currently a member of the Council of the City of São Paulo. His research focuses on pathology, pulmonary pathophysiology, respiratory diseases, and environmental health and applied ecology.



**Julie Sanders**  
**Deputy Vice-Chancellor and Provost**  
**Newcastle University**

Julie Sanders is Professor of English Literature and Drama and Deputy Vice-Chancellor and Provost. She has special responsibilities for academic strategy, a team of University Deans and the three Faculties at Newcastle (Humanities and Social Sciences, Science Agriculture and Engineering and Medical Sciences). She is also the Executive lead for our work on Equality, Diversity and Inclusion, and Social and Environmental Justice.



**Aurora Sharrard**  
**Director, Office of Sustainability**  
**University of Pittsburgh**  
**Executive Director & Vice President**  
**Innovation for Green Building Alliance**

Aurora Sharrard assumed her role as Pitt's first-ever director of the Office of Sustainability in 2018. Since then the office has taken the lead in developing and implementing university-wide sustainability strategies, activities, policies, collaborations, and partnerships to advance the Pitt Sustainability Plan.

In addition, Sharrard continues to serve as the executive director and vice president of innovation for the Green Building Alliance, a Pittsburgh-based nonprofit organization dedicated to ensuring that everyone has the opportunity to live, work, learn, and play in a healthy, high-performing building.

A nationally recognized green building expert, Sharrard co-founded the Pittsburgh 2030 District that calls for buildings in Downtown Pittsburgh and Oakland to achieve 50% reductions in energy use, water consumption, and transportation emissions by 2030.



**Anatha Shekhar**  
**Senior Vice Chancellor for the Health Sciences**  
**John and Gertrude Petersen Dean of the School of Medicine**  
**University of Pittsburgh**

Anantha Shekhar, MD, PhD, a nationally recognized educator, researcher and entrepreneur with major contributions in medicine and life sciences, has been named senior vice chancellor for the health sciences and John and Gertrude Petersen Dean of the School of Medicine at the University of Pittsburgh.

Shekhar joins Pitt from Indiana University (IU), the nation's largest medical school, where he holds a number of leadership roles. These are: executive associate dean for research affairs, distinguished professor, associate vice president for university clinical affairs and research, executive vice president of academic affairs for clinical research at IU Health, and founding director of the Indiana Clinical and Translational Sciences Institute, the only statewide institute of its kind.



**Carissa Shively Slotterback**  
**Dean, Professor, Graduate School of Public and International Affairs**  
**University of Pittsburgh**

Named dean of the Graduate School of Public and International Affairs (GSPIA) in 2020, Dr. Slotterback formerly served as Associate Dean of the Humphrey School of Public Affairs at the University of Minnesota. She is widely recognized for her research and teaching on public engagement and decision making in environmental, land use, and transportation planning. She has led a number of initiatives focused on interdisciplinary and engaged research and education and has held a number of leadership roles with the Association of Collegiate Schools of Planning.



**Luke Smith**

**Lecturer in Data-centric Civil Engineering  
Deputy Director of the Urban Observatory  
Newcastle University**

Luke Smith is a civil engineer with a PhD in flood forecasting on supercomputer architectures. His current research projects range from real-time flood risk assessments using IoT networks and machine learning, to smart city infrastructure, and reducing virus transmission on public transport. He has a decade of experience in software engineering, politics and civil engineering gleaned from academia and industry.



**Jae-Jae Spoon**

**Director, European Studies Center  
Professor, Department of Political Science  
University of Pittsburgh**

A professor of political science and director of the European Studies Center at Pitt, Jae-Jae Spoon focuses her research on comparative electoral behavior primarily in Europe. In addition, she serves as co-editor for the Journal of Elections, Public Opinion and Parties and Research & Politics.

Before coming to Pittsburgh, Spoon taught at the University of Iowa and the University of North Texas and was a visiting researcher at the University of Mannheim.



**Bridget Stratford**

**Co-Founder, North East Solidarity & Teaching  
Newcastle University**

Bridget Stratford co-founded and now manages North East Solidarity and Teaching, a Newcastle University Students' Union (NUSU) Go Volunteer project. The organization strives to educate and empower refugees and asylum seekers living in the area.

Last year, the project supported nearly 250 learners and worked with more than 400 student volunteers. A psychology wellbeing practitioner, Stratford is seeking to expand the project's outreach by increasing opportunities for volunteers and support services for learners.



**Mark Anthony Thomas**  
**President**  
**Pittsburgh Regional Alliance**

Mark Anthony Thomas was appointed president of the Pittsburgh Regional Alliance, an affiliate of the Allegheny Conference on Community Development, effective July 2019. He is responsible for creating, developing and executing the 10-county Pittsburgh region's economic development strategy and advancing partnerships to drive job creation and business investment. Mark has nearly two decades of experience crafting and executing economic growth strategies and cross-sector collaboration for New York City, Los Angeles and Atlanta. In 2016, Mark was selected by New York City Economic Development Corporation (NY- CEDC) to serve as its first Senior Vice President of Partnerships, establishing teams to foster and manage industry and international relationships and business attraction. He played a pivotal role in launching the city's \$1.3 billion effort to catalyze 100,000 jobs in emerging industry sectors and further diversify the local economy. He's led efforts to partner with New York's international trade community to advance the city's global startup attraction, an approach recognized as the top North American FDI Strategy by *fDi* (Foreign Direct Investment) magazine in 2019.



**Liz Todd**  
**Professor of Educational Inclusion and Director of the Institute for Social Science**  
**Newcastle University**

Liz Todd is Professor of Educational Inclusion and Director of the Institute for Social Science at Newcastle University. Her research has a strong social justice agenda and she is known for her work on the interaction between communities and schools, involving young people in decision making, and respectful democratic approaches to change. She currently has a funded research project with the Child Poverty Action Group on poverty proofing the school day (in schools in England, Wales and Scotland). Her recent ESRC funded project will talk to more than 500 economically disadvantaged children and young people in the North East about how things are going for them now, what they and those around them are struggling with and what is going well, will engage policy makers in acting on the findings, and will disseminate using comics and videos that have been co-designed with young people. This is a region wide consultation to understand the challenges that the young face as a result of covid19. Liz is on the steering group of the West End Children's Community which is a locality place-based stakeholder alliance around the needs of communities and they are currently developing a play strategy and forming into a charity. She is a community leader in a regional community organising alliance (Citizens UK). Liz is passionate about the role of community organising in getting everyone working together out of various bubbles to bring about change for the common good. Her books *Beyond the school gates: can extended schools overcome disadvantage?* and *Partnerships for inclusive education* were highly commended. In the past Liz worked as a maths teacher and an educational psychologist before moving to Fiji for 3 years to the University of the South Pacific. She also works as a trainer in video interaction guidance and in narrative therapy.



**Belkys Torres**

**Executive Director of Global Engagement  
University of Pittsburgh**

Belkys Torres is executive director of global engagement at the University Center for International Studies. As a leading member of a team that works to achieve the University of Pittsburgh's global ambitions, she is a primary liaison for administrators, faculty, and staff on international partnerships, education abroad programs, community engagement, international student services, and global operations support. Her responsibilities include: advancing and assessing global learning; improving processes and procedures related to international partnership agreements; and leading the implementation of key initiatives in Pitt's strategic and global plans. Torres co-chaired the University's Year of Pitt Global committee (AY 2018-2019) and continues to serve Pitt's Community Engagement Centers Advisory Council and executive board of the Hispanic/Latino Professional Association. She holds a PhD in English with a specialization in Latinx Cultural Studies and Women's and Gender Studies from the University of Notre Dame and has years of experience coordinating academic initiatives at that institution and directing programs for the University of Miami.



**Sara Walker**

**Reader in Energy and Director of The Centre for Energy in the School of Engineering  
Newcastle University**

Dr. Walker spent eight years at De Montfort University, where her research and teaching focussed on renewable energy and energy efficiency technologies, and where she also completed a PhD part time. This PhD investigated the impact of electricity sector deregulation on renewable energy market share. During that period with De Montfort University, Dr. Walker worked on a number of research projects around renewable energy and energy efficiency, primarily funded by the European Commission. Dr. Walker then moved out of academia and into industry, with a five-year period in energy related consultancies. In 2007, Dr. Walker joined Northumbria University and continued her research on renewable energy and energy efficiency. In September 2015 Dr. Walker joined Newcastle University as Degree Programme Director for the MSc Renewable Energy Flexible Training Programme (REFLEX) and MSc Renewable Energy and Enterprise Management (REEM) until 2017. In September 2019 Dr. Walker became Director of the Newcastle University Centre of Research Excellence for Energy The Centre for Energy. Her research continues to focus on renewable energy and energy efficiency in buildings, energy policy, energy resilience, and whole energy systems. She is Director of the EPSRC National Centre for Energy Systems Integration, Deputy Director for the Supergen Energy Networks Hub, and Deputy Research Director for the Active Building Centre. Dr. Sara Walker therefore has extensive experience of energy efficiency and renewable energy at the building scale, over 24 years, across both industry and academia.





**Courtney Weikle-Mills**

**Associate Professor, Department of English, Literature Program  
University of Pittsburgh**

Courtney Weikle-Mills specializes in early American literature and children's literature. Additional research and teaching interests include citizenship, Atlantic and early Caribbean studies, readership and literacy, the novel, and the history of the book.

Her first book, *Imaginary Citizens: Child Readers and the Limits of American Independence, 1640-1868* (Baltimore: Johns Hopkins UP, 2013), won the Children's Literature Association's Honor Book Award for an outstanding book published in 2013. In it, she investigates how early Americans addressed the complications that children posed to the civic ideals of independence, reason, and consent by representing children as "imaginary citizens." Reviews can be found in *American Literature*, *Early American Literature*, *Journal of the History of Childhood and Youth*, *Children's Literature*, *Children's Literature Association Quarterly*, *Journal of American Studies*, *American Studies*, *American Literary History Online Review*, *Women's Studies Quarterly*, and *Legacy*, among other publications.

She is currently working on a new book tentatively titled, "Little Hands and Mouths: Children's Literature, Commerce, and Relationality in the Early Atlantic World," which traces the circulation of British and American children's literature in the early Caribbean, children's literature's relationship to transatlantic trade, and the early development of Caribbean children's culture.