



INTRODUCTION TO ARCTIC ISSUES WORKSHOP

February 18th 3:30pm - 7pm | 1502 Posvar and Zoom

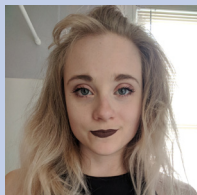
Learn from expert speakers about the Arctic region and critical issues that it faces through topics such as erosion and climate change in permafrost landscapes, Arctic security, the importance of art to climate awareness, and sustainable wound dressings made out of fish skin in Iceland. Attendees will receive a resource book about future opportunities to explore Arctic topics.



Alexandra (Aly) Yingst is a PhD student in Global Studies at the University of Iceland. Her PhD research focuses on what life is like for crew members onboard cruise ships. Previously, she obtained a Bachelor of Philosophy in Biological Sciences, Sociology, and International and Area Studies from the University of Pittsburgh. Before starting her PhD, Alexandra worked as an expedition guide and anthropology lecturer on cruise ships, primarily in the polar regions.



Dr. Brandon M. Boylan is Associate Professor of Political Science and Director of Arctic and Northern Studies at the University of Alaska Fairbanks. His research focuses on international security, political violence, ethnic conflict, separatist movements, and a variety of Arctic issues.. He teaches a range of undergraduate and graduate courses in international relations, comparative politics, and research methods, and advises several undergraduate, M.A., and Ph.D. students. He holds a Ph.D. in public and international affairs from the University of Pittsburgh.



Theresa Baughman is an artist, musician, and cultural critic. She graduated from the University of Pittsburgh in 2015 with a BA in studio arts and a minor in cultural anthropology. In her undergraduate studies, Theresa completed four research residencies including field studies in Rock River, WY and London, UK. In 2018 she participated in The Arctic Circle Residency via Svalbard, the North Pole. Theresa is a founding contributor to the online academic horror magazine What Sleeps Beneath where she writes about the subversive meanings behind visual storytelling.



Dr. Eitan Shelef is an Assistant Professor for the Department of Geology and Environmental Science at the University of Pittsburgh. His research interests include the feedbacks between geomorphology, tectonics and climate across different temporal and spatial scales. Dr. Shelef's current research is focused on the interaction between climate and erosion in Arctic areas, on the development of topography along strike slip faults and topographic escarpments, and on landslide occurrence and mapping. He earned his Ph.D. in Geology and Environmental Sciences from Stanford.

Speakers from Kerecis and Native Movement to be announced.



Pitt Global
Global Studies Center



Register and get more information here!

Co-sponsored by:

European Studies Center, Ford Institute, Global Experiences Office, Mascaro Center for Sustainable Innovation, Pitt Climate and Global Change Center, and Russian, East European, and Eurasian Studies.