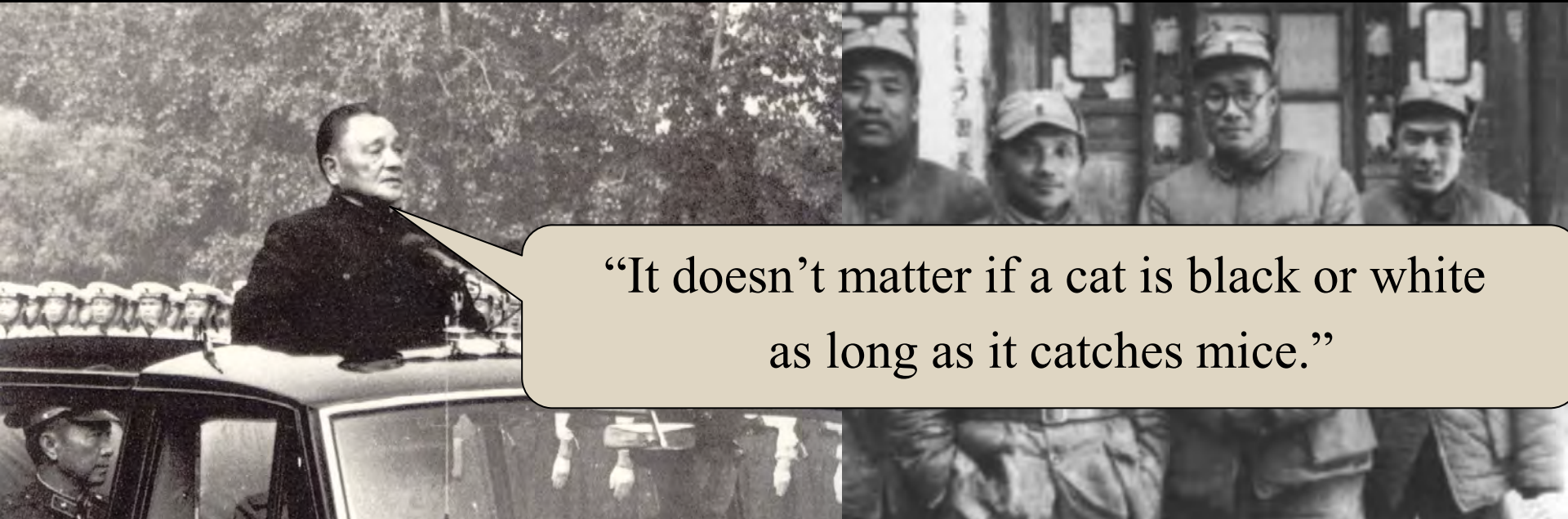


## Part 4: The Reform Era and Beyond

# The Reform Era

Deng Xiaoping (鄧小平 1904-1997)



“It doesn’t matter if a cat is black or white  
as long as it catches mice.”













# Political Irony (Political Pop)

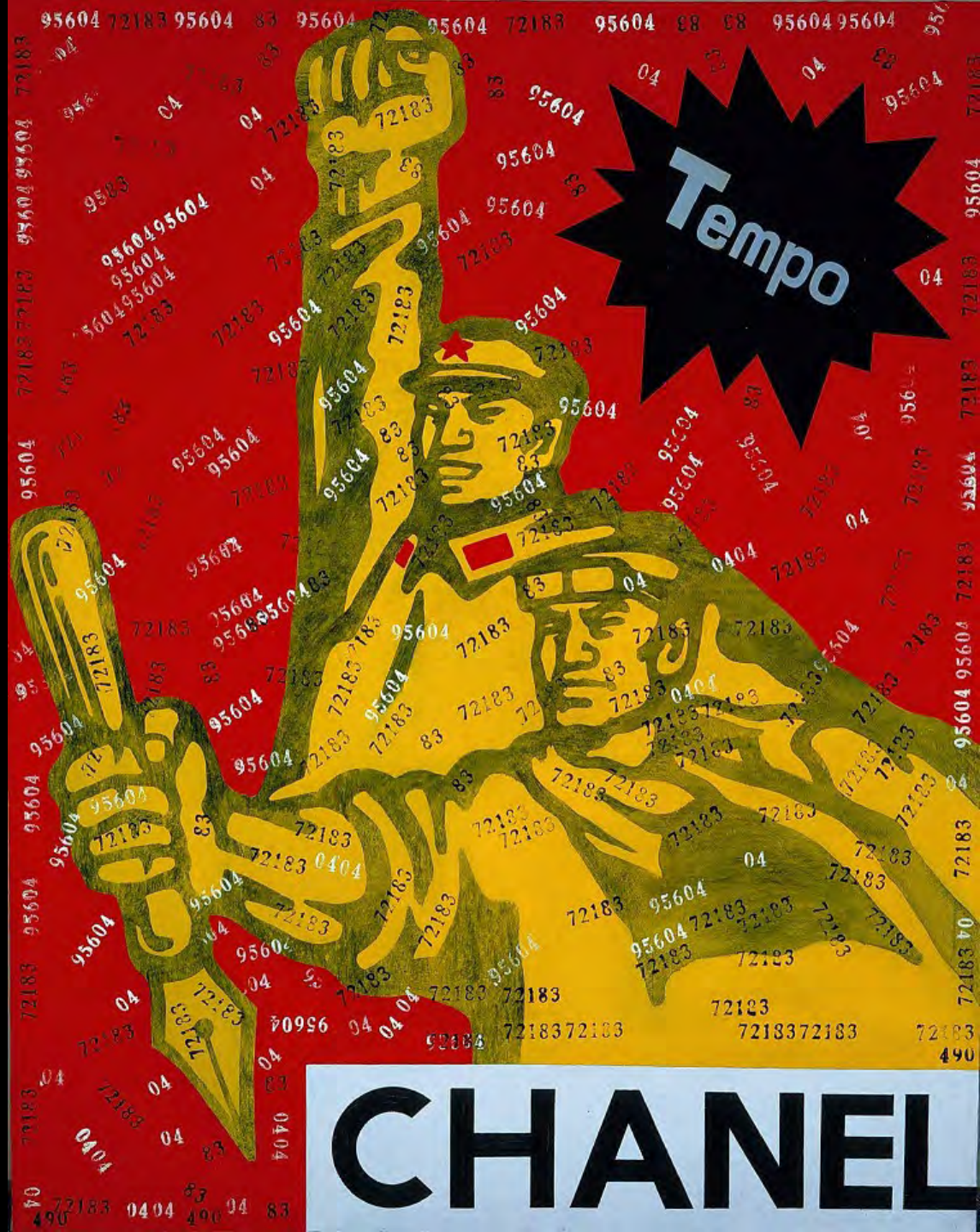
Wáng Guǎngyì 王广义  
(b. 1956)



*Chanel*, from the *Great Criticism*  
series, 1994

Oil on canvas

Oberlin Friends of Art Fund, 2001.20



Zēng Fánzhì 曾梵志  
(Chinese, b. 1964)



*Mask Series #7, 2000*  
Oil on canvas. Ruth C. Roush  
Contemporary Art Fund, 2002.24



曾梵志 2000  
Zeng Fanzhi 2000





李健 2000  
Long Peace

















李健 2000  
Long Peace



# Hung Liu

(刘虹 Liú Hóng)  
(American, born in China, 1948-2021)







*Bird Bath, from the series Strange Fruit, 2001*

Hung Liu (Liú Hóng 刘虹)

(American, born in China, 1948–2021)

Oil on canvas. Gift of Driek (OC 1965) and Michael (OC 1964) Zirinsky  
in honor of Gertrude B. Bestebreurtje, 2010.18.1

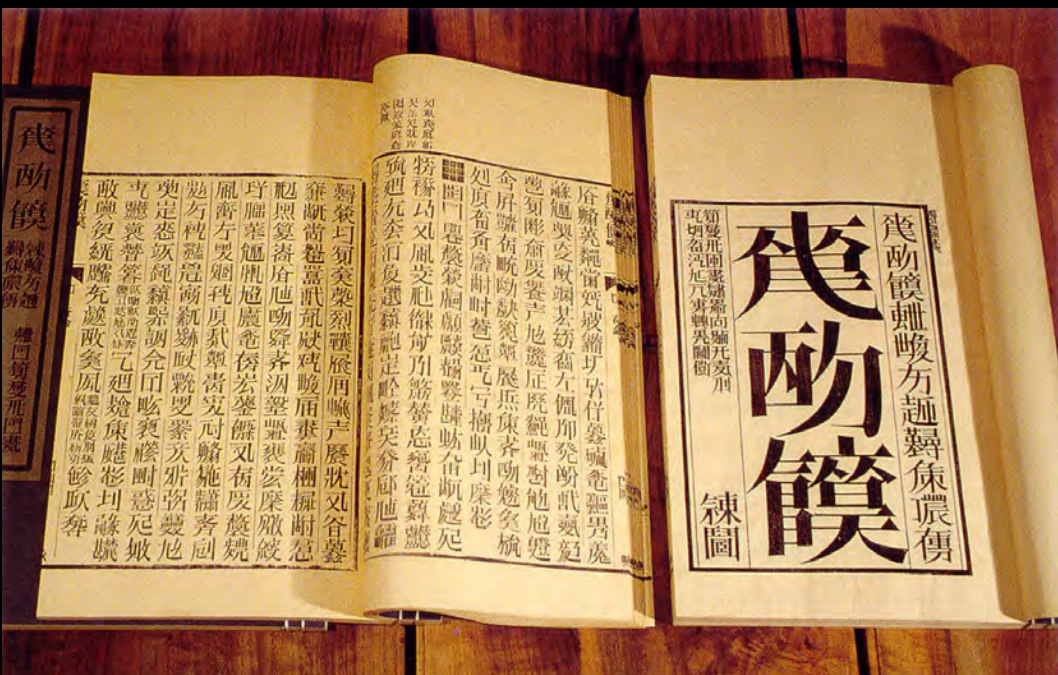




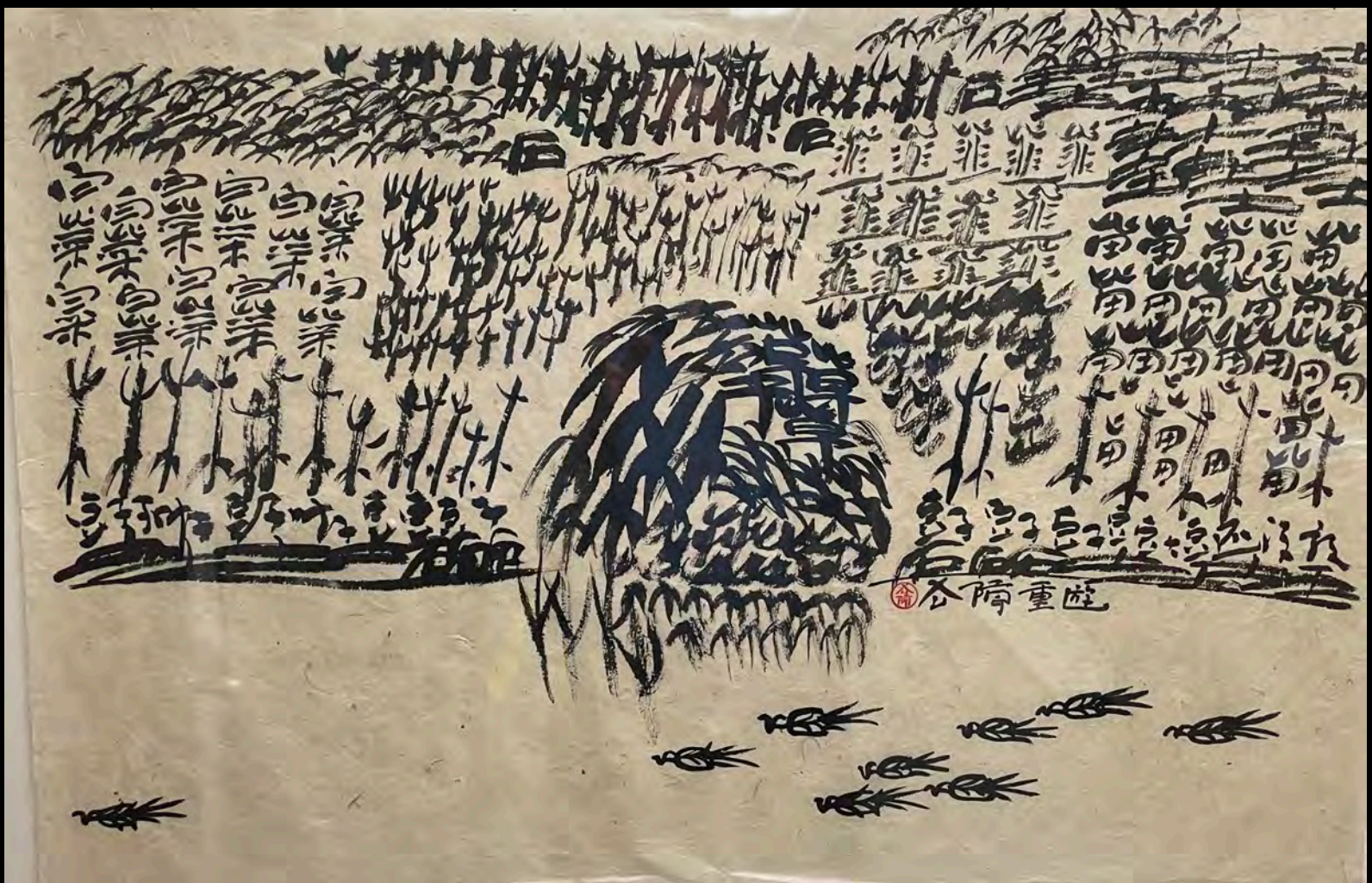


# Xu Bing 徐冰

(b. 1955)







*Landscript: Revisit, 2001*

Xú Bīng 徐冰 (Chinese, b. 1955)

Ink on paper. Gift of Driek (OC 1965) and Michael (OC 1964)

Zirinsky, TL28.2022.55



石  
木  
竹  
土  
苗  
魚  
韭  
艸

stone (石 *shí*)

tree (木 *mù*)

bamboo (竹 *zhú*)

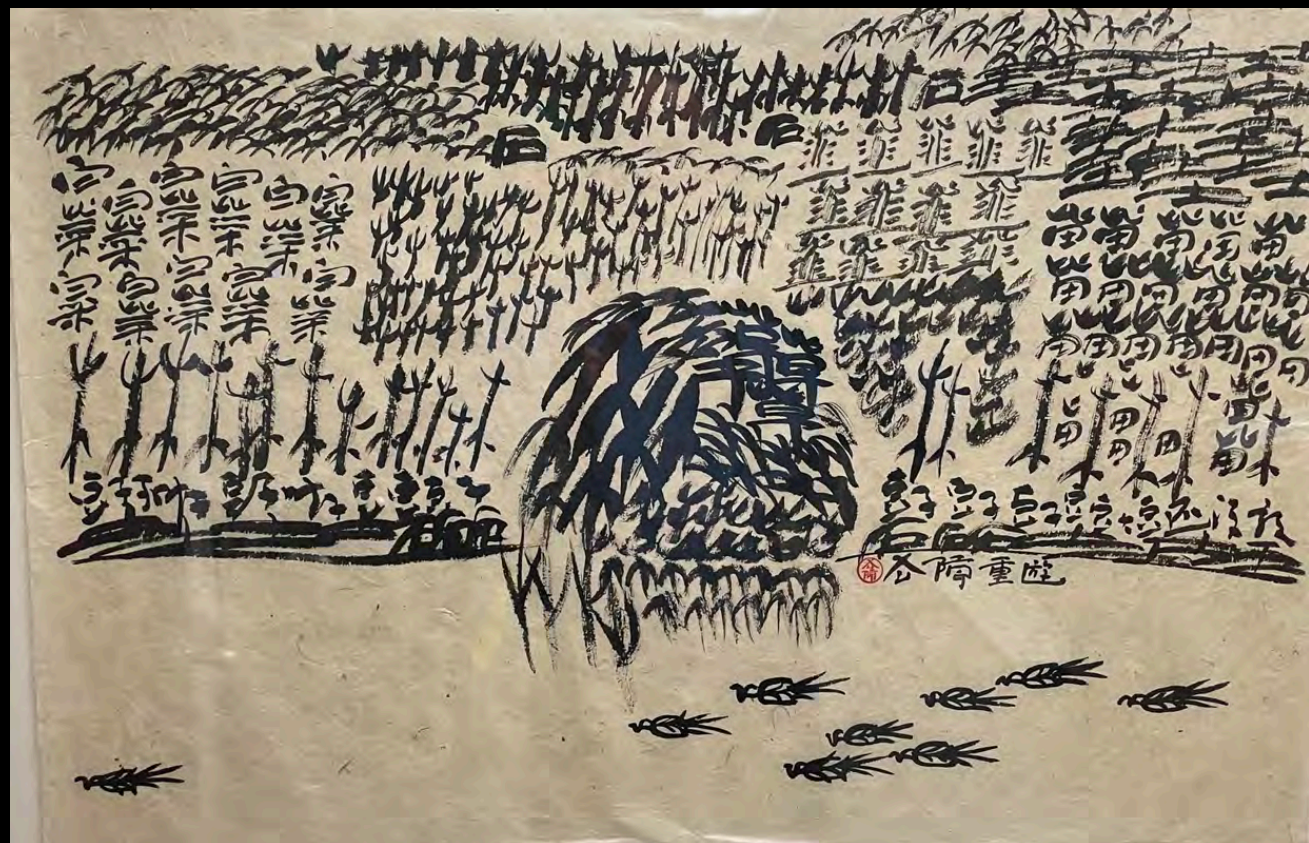
earth (土 *tǔ*)

sprout (苗 *miáo*)

fish (魚 *yú*)

leek (韭 *jiǔ*)

grass (艸 *cǎo*)







Mansheng Wang  
(王满晟 Wáng Mǎnshèng)  
(American, born in China 1962)





*The Breath of Autumn* 秋高氣爽,  
2017.

Mansheng Wang

(American, born in China 1962)

Chinese Ink, Walnut Ink, Egg Tempera,  
Acrylics on Paper.

Oberlin Friends of Art Fund, 2022.30























# Yáng Yǒngliáng 杨泳梁

(b. 1980)







*The Path,*  
from the series  
*Time Immemorial,*  
2016  
Yang Yongliang  
杨泳梁  
(b. 1980)  
Giclée print of a  
digital photographic  
collage. Oberlin  
Friends of Art Fund,  
2017.4















*Riding the Strong Currents:  
20th and 21st Century Chinese Paintings from the  
AMAM Collection*

Kevin R. E. Greenwood  
Joan L. Danforth Curator of  
Asian Art



**OBERLIN**  
COLLEGE & CONSERVATORY

