

# **IMAGES OF CHINA**

- All of these photos were taken between the winter of 1978 and the late spring of 1985. The urban images focus mainly on Shanghai and Beijing while the rural images reflect smaller towns and villages in the eastern and northern half of China.
- If you have been to China recently, how are these views similar or different from what you saw?
- If you have never visited China, how do the views compare with current media coverage?

# URBAN IMAGES

























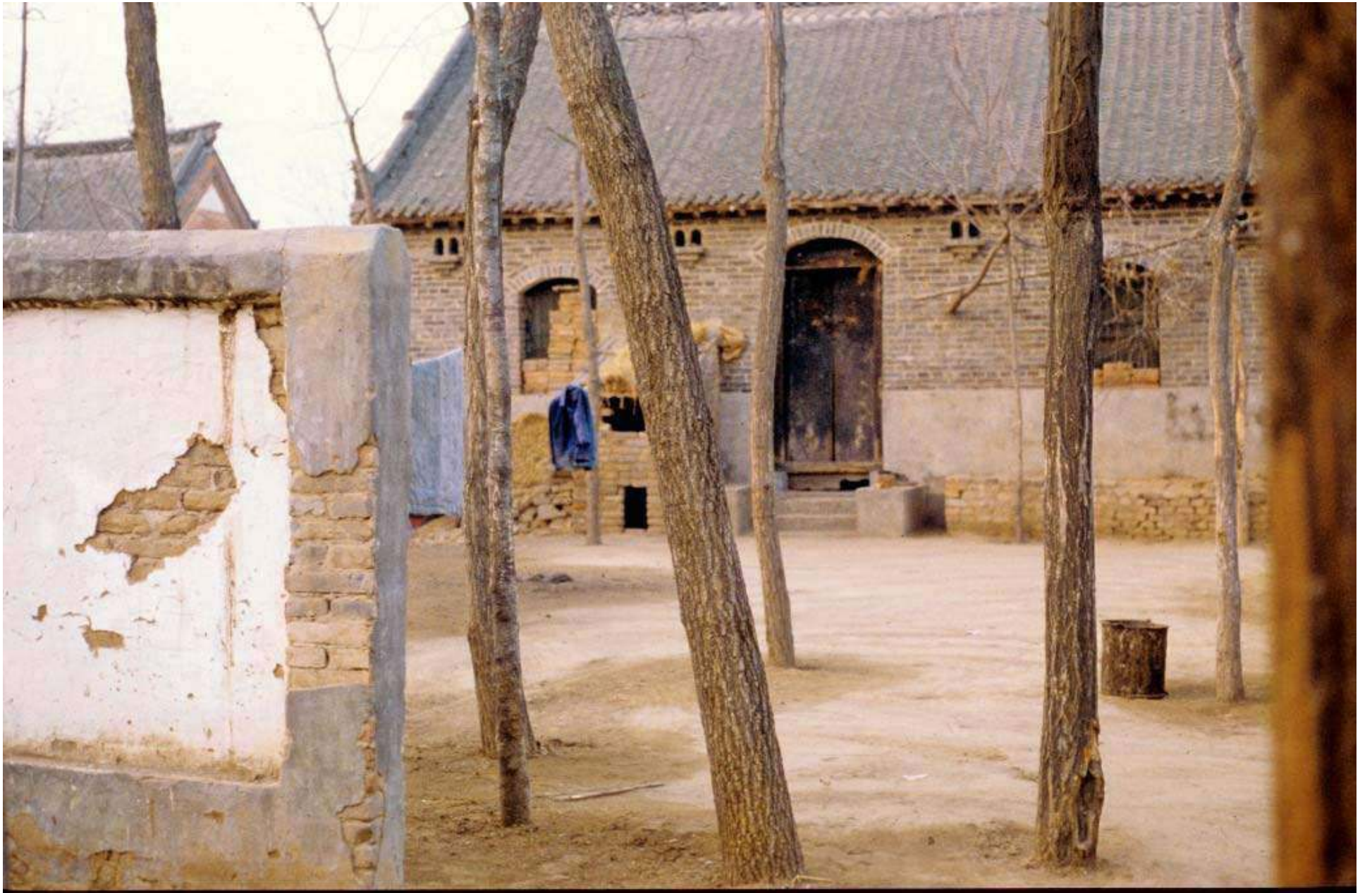






# **RURAL IMAGES**









女理发

中外手

服务项目

各种  
修理  
自行车  
手铃  
打气  
各种  
修理  
自行车  
手铃  
打气  
各种  
修理  
自行车  
手铃  
打气











