



University of
Pittsburgh

University Center for
International Studies

Global Migrations DBQ

Prompt:

How have global migrations in recent decades represented political, economic, and climatic upheaval and change?

DOCUMENT 1

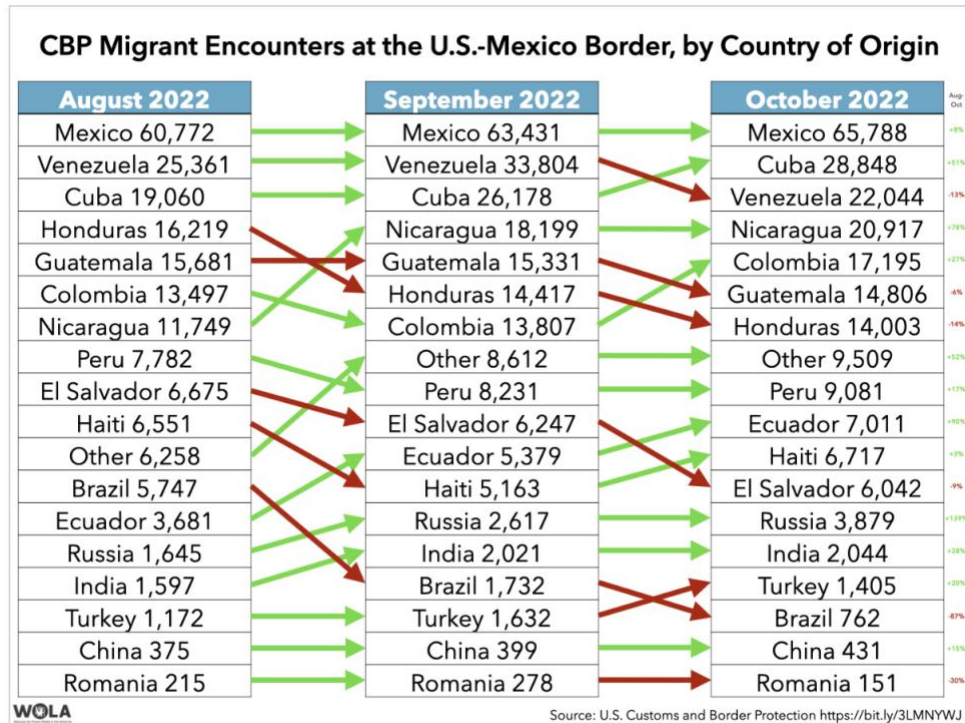
Source: <https://www.un.org/en/global-issues/migration>

“Today, more people than ever live in a country other than the one in which they were born. According to the Population Division of the United Nations Department of Economic and Social Affairs (UNDESA), as of 1 July 2020 the global number of international migrants was estimated to be 281 million. International migrants comprise some 3.5 per cent of the global population, compared to 2.8 per cent in 2000 and 2.3 per cent in 1980.”

1. How does the above information impact the topic of global migration?

DOCUMENT 2

Source: <https://www.wola.org/2022/11/migration-country-by-country-at-the-u-s-mexico-border/>



1. Select two countries that have seen dramatic increases in efforts to enter the U.S. through the U.S.-Mexico border and two countries that have seen dramatic decreases. Conduct a bit of research for both phenomena to ascertain the causes and discuss them here.

DOCUMENT 3

Source: <https://wapo.st/3ythizJ>



The paths shown are for illustration purposes only. Actual routes change frequently.

TIM MEKO AND CATE CADELL / THE WASHINGTON POST

1. Identify the names of the countries not listed on the map and write them below in order from Mexico down to Colombia.
2. Based on the illustration, why might the U.S.-Mexico border be such a heavily traveled area for entry into the United States?

DOCUMENT 4

Source: <https://www.cfr.org/article/crossing-darien-gap-migrants-risk-death-journey-us>



DOCUMENT 5

Source: <https://www.cfr.org/article/crossing-darien-gap-migrants-risk-death-journey-us>

“Once in Acandí [a town near the Colombia border], migrants will head for the Darién Gap jungle, a dangerous hike that can take ten or more days. Many pay to be led by local guides, or “coyotes.” Along the route are smugglers and criminal groups, including members of the Revolutionary Armed Forces of Colombia and the Gulf Clan, a paramilitary group and Colombia’s largest drug cartel. These groups often extort and sexually assault migrants. ‘Deep in the jungle, robbery, rape, and human trafficking are as dangerous as wild animals, insects and the absolute lack of safe drinking water,’ Jean Gough, then regional director for Latin America and the Caribbean at the UN Children’s Fund (UNICEF), said in an October 2021 news release.”

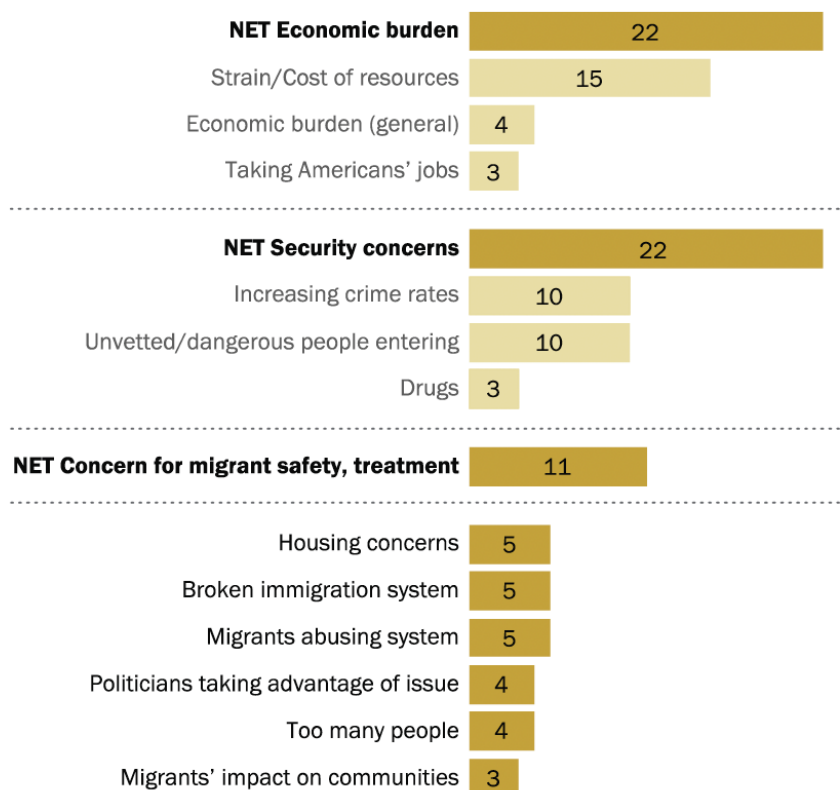
1. Looking at Document 4, why is it necessary for many migrants to pass through the Darién Gap?
2. According to Document 5, why is passage through the Darién Gap so dangerous?

DOCUMENT 6

Source: <https://www.pewresearch.org/politics/2024/02/15/in-their-own-words-americans-concerns-feelings-about-u-s-mexico-border-situation/>

Americans commonly cite economic, security concerns over situation at U.S. border with Mexico

What is your top concern, if any, about the large number of migrants seeking to enter the U.S. at the border with Mexico? (%) [open-end]



Note: Researchers coded up to three responses. Responses that were given by fewer than 3% of respondents not shown. Refer to the Topline for full details. Numbers may exceed 100% due to multiple responses. 64% of respondents who received this question provided a response.

Source: Survey of U.S. adults conducted Jan. 16-21, 2024.

PEW RESEARCH CENTER

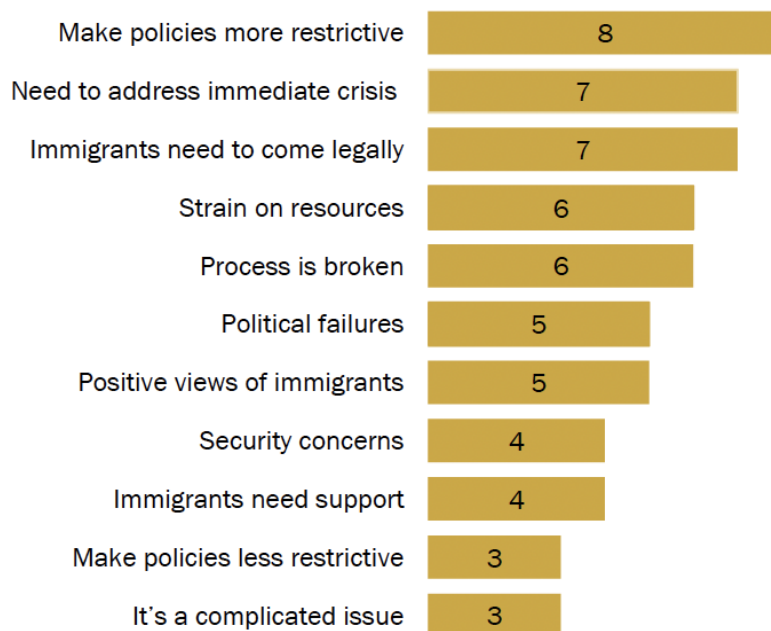
1. What are most Americans concerned about regarding the situation at the U.S.-Mexico border?

DOCUMENT 7

Source: <https://www.pewresearch.org/politics/2024/02/15/in-their-own-words-americans-concerns-feelings-about-u-s-mexico-border-situation/>

In their own words: Americans share their thoughts about immigration

What other thoughts about immigration would you like to share? (%)
[open-end]



Note: Researchers coded up to three responses. Responses that were given by fewer than 3% of respondents not shown. Refer to the Topline for full details. 45% of respondents who received this question provided a response.

Source: Survey of U.S. adults conducted Jan. 16-21, 2024.

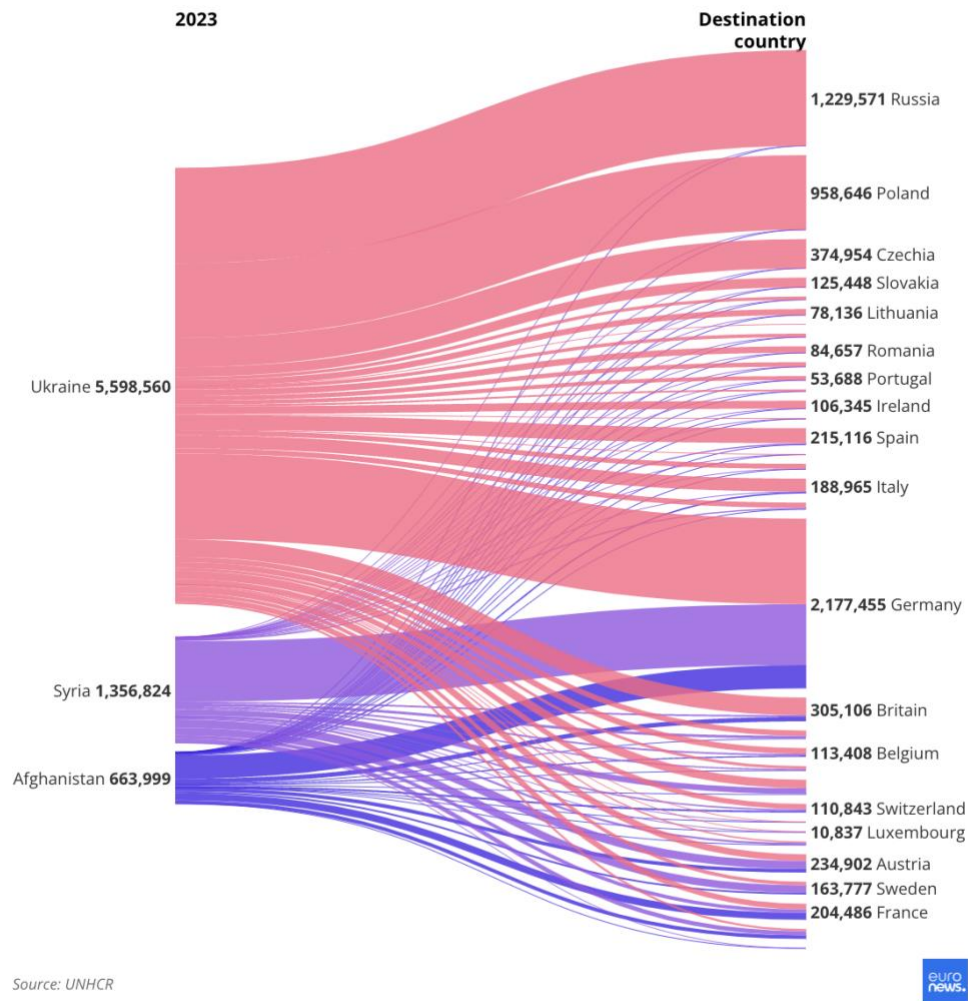
PEW RESEARCH CENTER

1. Pick one of these thoughts and consider an argument from both sides. What would you argue in support of and against this thought?

DOCUMENT 8

Source: <https://www.euronews.com/my-europe/2024/09/04/number-of-refugees-and-asylum-seekers-in-europe-keeps-rising-data-shows>

In 2023, the most refugees came to Europe from Syria, Ukraine and Afghanistan



1. Which countries in Europe have received the most refugees from Ukraine, Syria, and Afghanistan in 2023, respectively?
2. Conduct a bit of research about events in each of these countries to understand why they are coming to Europe. What are the reasons? What do these countries have in common? How do their reasons differ?

DOCUMENT 9

Source: [The Economist](#)



IMAGE: THE ECONOMIST

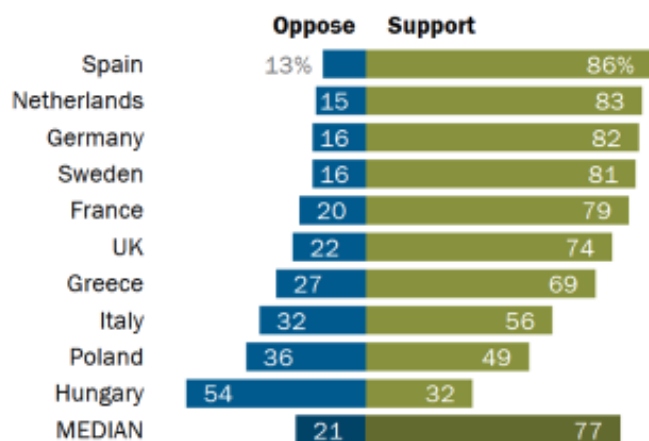
1. From which countries and continents do most migrants to the EU originate? What do their migration routes have in common and how do they differ?

DOCUMENT 10

Source: <https://www.pewresearch.org/global/2019/03/19/europeans-credit-eu-with-promoting-peace-and-prosperity-but-say-brussels-is-out-of-touch-with-its-citizens/>

Most support taking in refugees

% who ___ taking in refugees from countries where people are fleeing violence and war



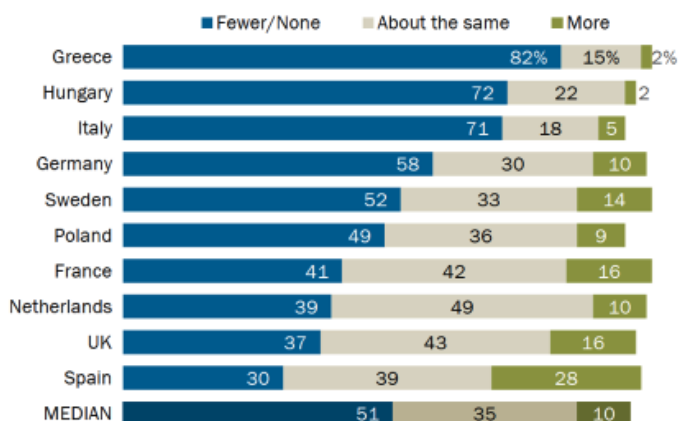
Note: Don't know and neither/both responses not shown.

Source: Spring 2018 Global Attitudes Survey. Q53a.

PEW RESEARCH CENTER

Few want to allow more immigrants

We should allow ___ immigrants to move to our country



Note: Responses of "Fewer" and "None" are combined. Responses of "None" are volunteered. Don't know responses not shown.

Source: Spring 2018 Global Attitudes Survey. Q52.

PEW RESEARCH CENTER

1. What are the differing perspectives in the European Union regarding accepting more refugees into their countries versus accepting more immigrants in their countries?
Why might this be the case?

DOCUMENT 11

Source:

https://www.oliverschopf.com/html/e_edcart/single_a/eu_elections_fpoe_win_2024.html



1. How does the cartoonist depict the presence of Austria's FPO (Freedom) party in the EU?

DOCUMENT 12

Source: <https://www.statista.com/chart/26117/average-number-of-internal-climate-migrants-by-2050-per-region/>

Climate Change, the Great Displacer

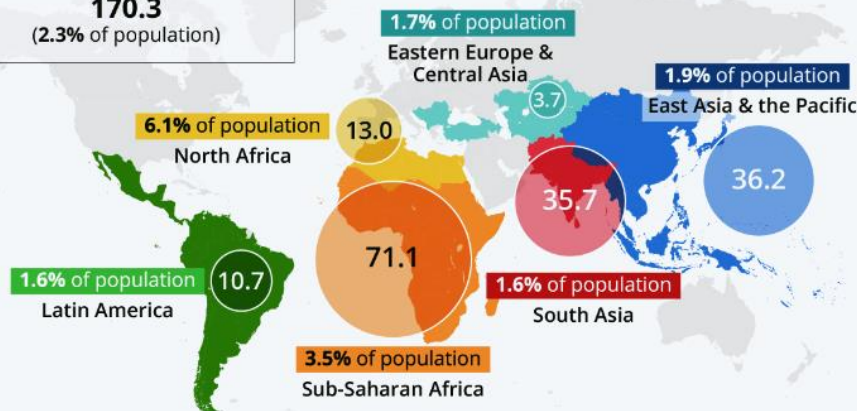
Average number of internal climate migrants by 2050 per region (in millions)*



Total in surveyed regions

170.3

(2.3% of population)



* Modeled on pessimistic reference = High emission & unequal development scenarios concerning water availability, crop productivity and sea-level rise

Source: World Bank



statista

DOCUMENT 13

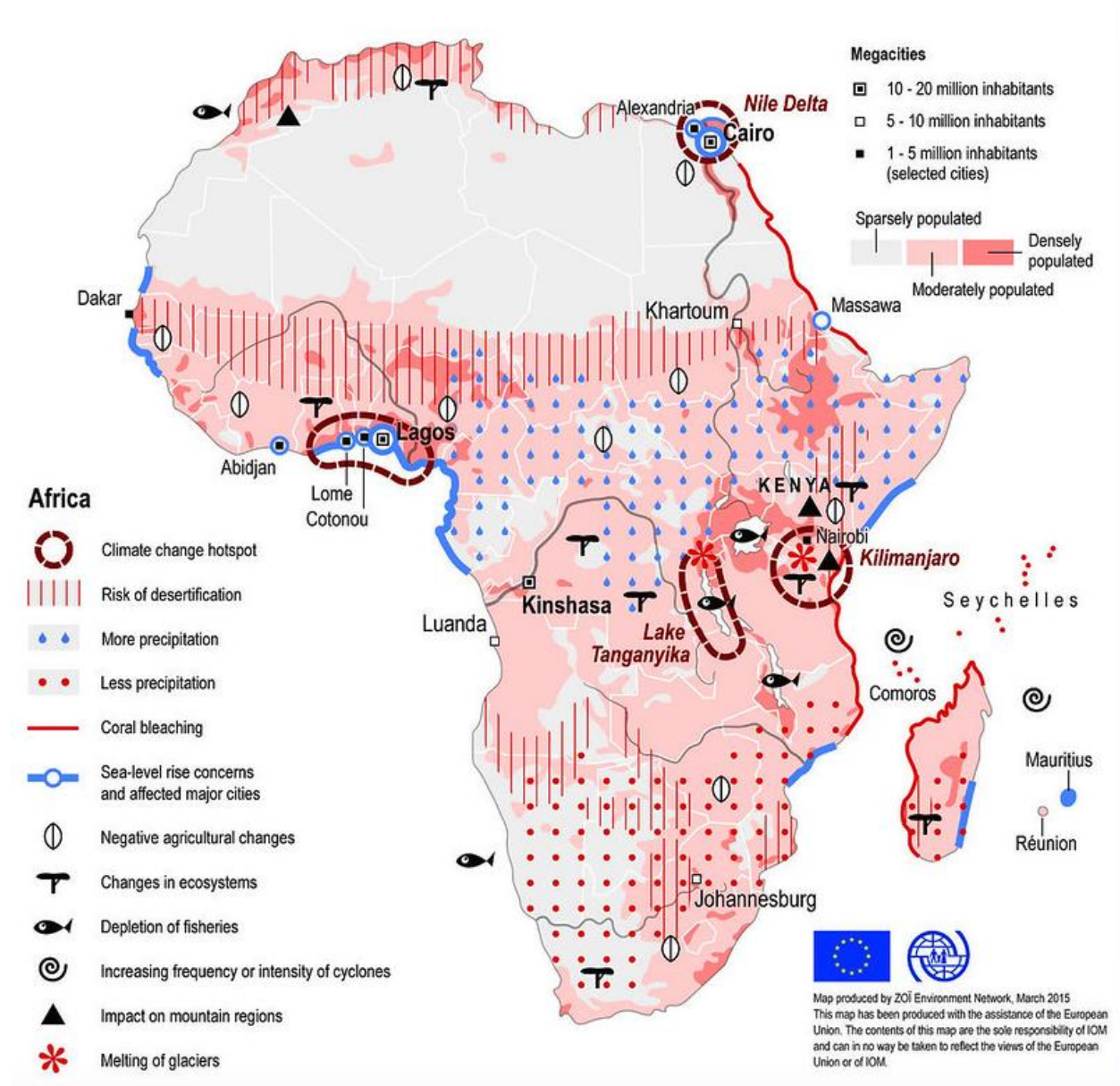
Source: <https://www.rescue.org/press-release/unprecedented-crisis-west-africa-nearly-9-million-displaced-conflict-and-climate>

“Conflict remains a primary driver of displacement, but over the last few decades, climate change has significantly impacted migration decisions across West Africa. The overlap of conflict and climate disasters underscores the urgent need for comprehensive and coordinated responses to break the cycle of climate change and armed conflict, and to increase humanitarian access and funding that supports resilience and adaptation to climate change.”--Modou Diaw, Regional Vice President for the IRC in West Africa

1. According to the illustrated map (Document 12), where are the vast majority of internal climate migrants going to come from by 2050? According to the text (Document 13), why might this be the case?

DOCUMENT 14

Source: <https://www.flickr.com/photos/zoienvironment/22777591685>



1. What kinds of climate change threats does the continent of Africa face?

2. Choose two of these threats and the regions of Africa they impact. Conduct some research to determine why the phenomenon is happening and the severity of its impact to that region.

DOCUMENT 15

Source: <https://asiapacificcurriculum.ca/learning-module/asia-profile-bangladesh>



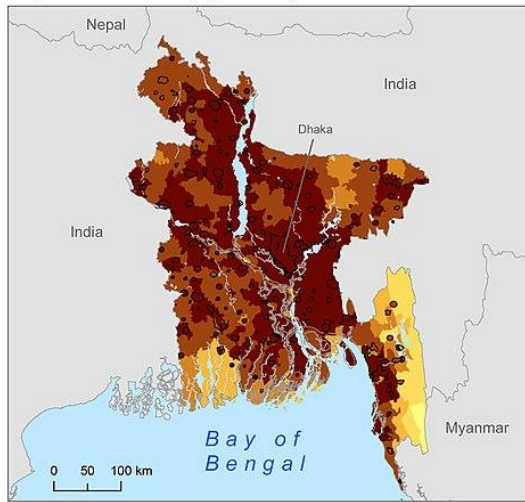
DOCUMENT 16

Source: [https://en.wikipedia.org/wiki/Climate_change_in_Bangladesh#/media/File:Urban-Rural_Population_and_Land_Area_Estimates,_v2,_2010_Bangladesh_\(13873798283\).jpg](https://en.wikipedia.org/wiki/Climate_change_in_Bangladesh#/media/File:Urban-Rural_Population_and_Land_Area_Estimates,_v2,_2010_Bangladesh_(13873798283).jpg)

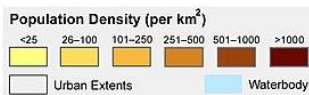
Urban-Rural Population and Land Area Estimates, Version 2, 2010: Bangladesh

Low Elevation Coastal Zone

Population Density (per km²)

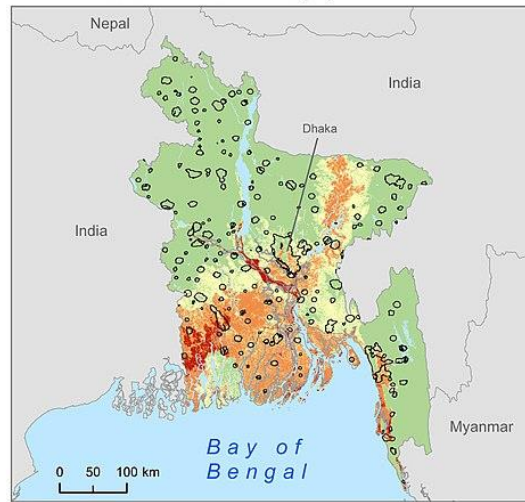


Lambert Azimuthal Equal Area Projection



© 2013, The Trustees of Columbia University in the City of New York.
Data Source: Center for International Earth Science Information Network (CIESIN)
/Columbia University. 2013. Low Elevation Coastal Zone (LECZ) Urban-
Rural Population and Land Area Estimates, Version 2. Palisades, NY: NASA
Socioeconomic Data and Applications Center (SEDAC). <http://sedac.ciesin.columbia.edu/data/set/lec2-urban-rural-population-land-area-estimates-v2>.

Low Elevation Coastal Zone (m)



Map Credit: CIESIN Columbia University, November 2013



The Low Elevation Coastal Zone (LECZ) Urban-Rural Population and Land Area Estimates Version 2 data set provides continent-level and country-level estimates of land area and urban, rural, and total population for 202 statistical areas (countries and other UN recognized territories). Population inputs were derived from Gridded Rural-Urban Mapping Project, version 1 (GRUMPv1). Elevation data were derived from the Shuttle Radar Topographic Mission (SRTM) 90 meter data set.



Center for International Earth
Science Information Network
EARTH INSTITUTE COLUMBIA UNIVERSITY

This document is licensed under a
Creative Commons 3.0 Attribution License
<http://creativecommons.org/licenses/by/3.0/>

DOCUMENT 17

Source: <https://apnews.com/article/floods-bangladesh-dhaka-jewel-420620595a7e5229ef539f6e27ea085f>

“We have grown up seeing the river, we live on the river by catching fish. But now it has taken everything from us...My heart aches when I think of my village, my ancestors, my old days. I had no choice but to leave my birthplace.”-- Mohammad Jewel

1. Using documents 15-17, answer the following:

- Where is Bangladesh located? How has its location and its population density in a low elevation coastal zone impacted it and its inhabitants' well-being?
- How can Bangladesh serve as a case study for the issues around climate change?